

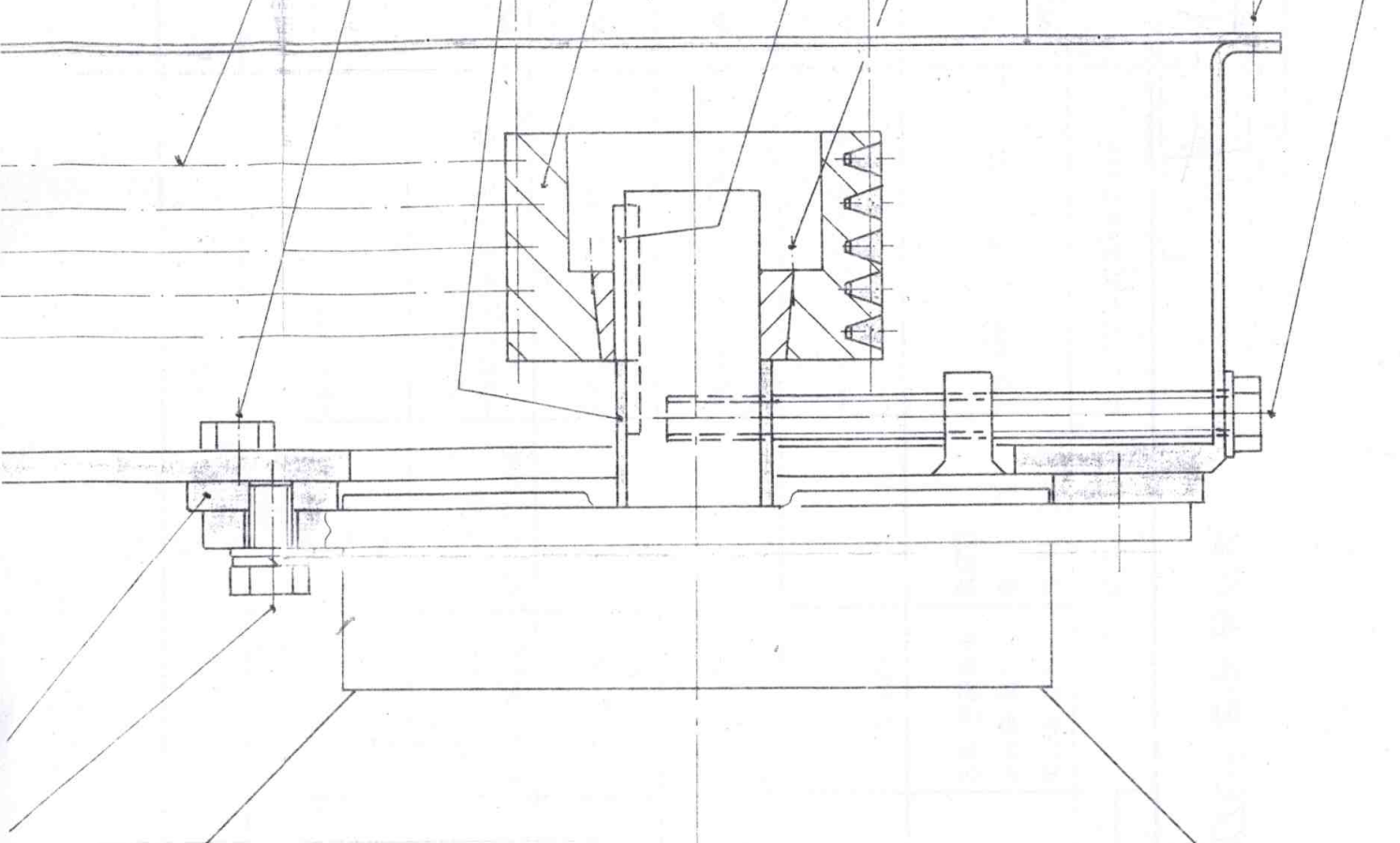
* : cskim@huchems.com
TEL:061-680-4653 FAX:061-680-4539

M/R						
RYM200800694	001	2008/09/01	M02	M0200M0-372	EA	1.0000
<u>2008/10/31</u>						
****. MOTOR, INDUCTION, 6.3KW, 460V, 11.8A, 3 PHASE, 60HZ, RPM:1150, FRAME:132M V3, 6P, IP54, INS CLASS:F, OUT DOOR, MAKER:MARELLIMOTORI OR OR FOR 62R-106/107. *NOTES*NOTES:1)FAN COVER & CONNECTION BOX MAT'L:CAST IRON, 2) , 3)BEARING "ZZ" TYPE . 4) MOTOR SPEC(MARELLIMOTORI, S/N:03534).5) FRAME						
RYM200800694	002	2008/09/01	M02	M0200M0-373	EA	1.0000
<u>2008/10/31</u>						
****. MOTOR, INDUCTION, 6.6KW, 460V, 11.5A, 3 PHASE, 60HZ, RPM:1150, FRAME:132S, 6P, IP54, INS CLASS:F, OUT DOOR, MAKER:MARELLIMOTORI OR OR FOR 62S-106/63S-106. *NOTES*NOTES:1)FAN COVER & CONNECTION BOX MAT'L:CAST IRON, 2) , 3)BEARING "ZZ" TYPE .4) MOTOR SPEC(MarelliMotor, S/N:A4C1302B0016).5) FRAME						
*** LAST ITEM ***						
: 2008 09 05 16:00						

:

Item #1

NO, 2nd DINI.: 5 BELTS 28 26,27 25₃ 25₅ 25.4 25.6 30 31 29
 WASHER : 3 "
 REACTOR : 3 "
 4th WASHER : 2 "



ELECTRIC MOTOR
 1160 RPM - 60HZ - IP55
 FRAME SIZE : 180L - 3rd MONO., 2nd DINI. - 17,4 KW
 132M - 1st, 2nd WASH., UREA REACT. - 6,3 KW
 132S - 3rd, 4th WASH. - 3,5 KW

62R-106/107

S-106

Item #2

MOTOR 6,6kW, 60Hz
SIZE: T32S, 1750 min⁻¹

Stroke for tension

490
min.474 max.515

Mounting position

TO REMOVE BEFORE
DISMANTLING

INDUCTIVE SENSOR
SPEED ALARM
P+F: NCB2-12GM35-NO
M12x1

INDUCTIVE SENSOR
VIBRATION ALARM
BAUMER: IWRM 1219501
M12x1

PT100 GAUGE
TEMPERATURE ALARM
G1/8"

~1900

